

The Southwest Florida Water Management District (District) purchases and manages conservation lands to protect water resources and to preserve and restore Florida ecosystems. There are more than 343,000 acres of conservation lands in the region open to the public for recreation opportunities. The 1,000-acre Oak Ridge Equestrian Area was purchased to preserve rural Hillsborough County and is part of the Lower Hillsborough Wilderness Preserve. The preserve's primary purpose is water storage and water supply.

Designated trails provide specific nature-based experiences while minimizing impacts to the lands and natural systems. Markers identify the type of recreation available and arrows indicate the direction of the trail. Main trail intersections are numbered. See chart on back for latitude and longitude points that correspond to these intersections. While visiting these properties, there are certain rules and restrictions in place to protect the natural environment and to ensure a quality experience for all conservation land visitors.

We all must share the responsibility of protecting the environment to make sure that we, as well as future generations, can enjoy quality outdoor experiences. Please visit [WaterMatters.org](http://WaterMatters.org) to learn more about how to support conservation efforts.

Latitude		Longitude
28 08 54.57	1	82 16 42.52
28 08 55.04	2	82 16 27.69
28 08 52.57	3	82 16 19.87
28 08 47.98	4	82 16 17.23
28 08 25.05	5	82 16 12.70
28 08 30.78	6	82 15 50.61
28 08 53.91	7	82 16 01.06
28 08 53.48	8	82 16 05.97
28 09 07.53	9	82 16 08.55
28 09 22.35	10	82 16 02.00
28 09 23.71	11	82 16 01.72
28 09 19.08	12	82 15 41.48
28 09 04.25	13	82 15 29.78
28 08 53.22	14	82 15 44.60
28 08 50.89	15	82 15 44.33
28 08 46.68	16	82 15 35.89
28 08 42.04	17	82 15 35.63
28 08 31.26	18	82 15 49.56
28 08 31.50	19	82 15 43.24
28 08 13.72	20	82 15 51.00



VISAY 04-15

The Southwest Florida Water Management District (District) does not discriminate on the basis of disability. This nondiscrimination policy involves every aspect of the District's functions, including access to and participation in the District's programs and activities. Anyone requiring reasonable accommodation as provided for in the Americans with Disabilities Act should contact the District's Human Resources Bureau Chief, 2379 Broad St., Brooksville, FL 34604-6899; telephone (352) 796-7211 or 1-800-423-1476 (FL only), ext. 4702; TDD 1-800-231-6103 (FL only); or email [ADACoordinator@WaterMatters.org](mailto:ADACoordinator@WaterMatters.org).

GET OUTSIDE!



Lower Hillsborough  
Wilderness Preserve

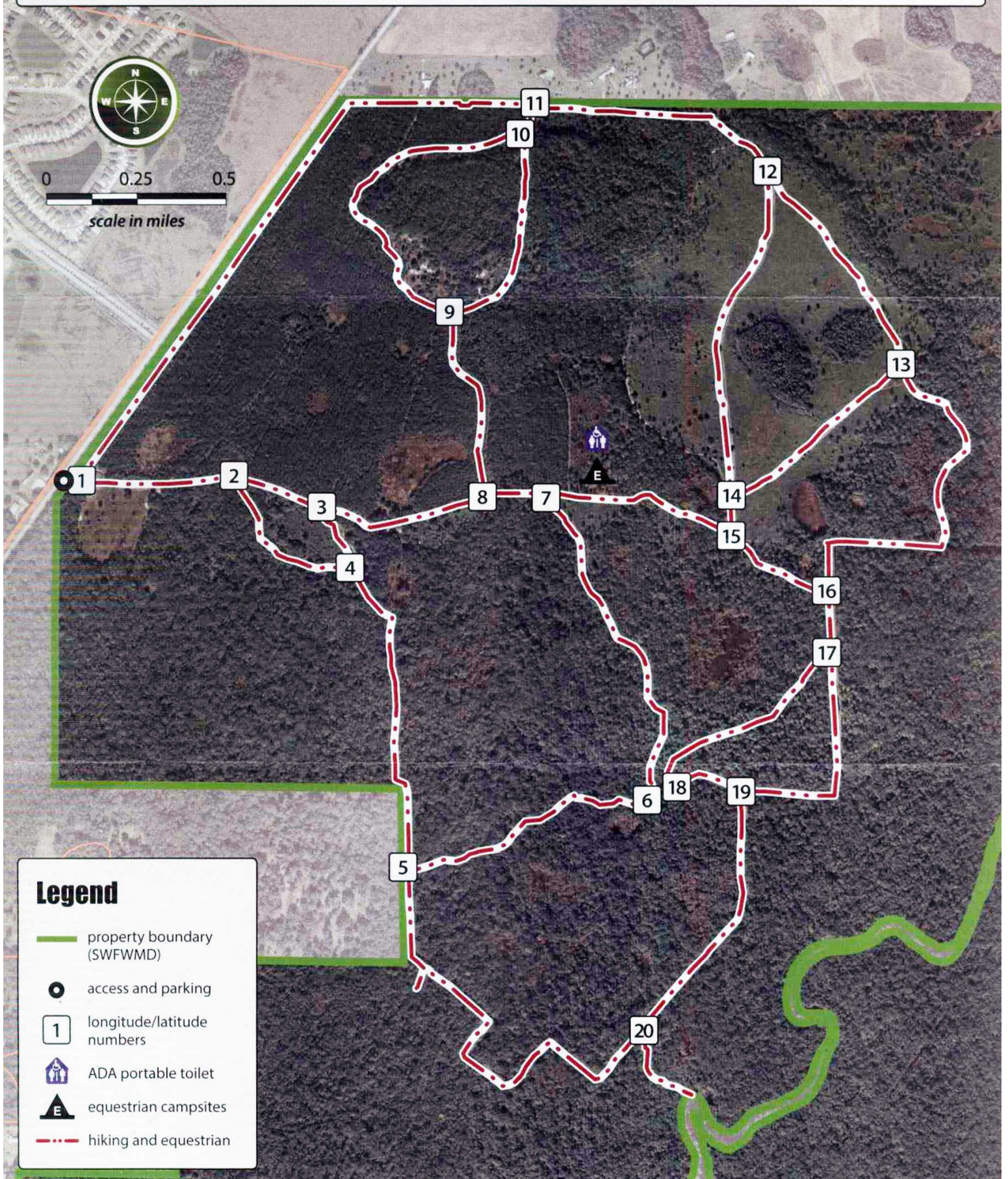
Oak Ridge  
Equestrian Area

TRAIL MAP

15847 Morris Bridge Road  
Thonotosassa, FL 33592



Many recreational opportunities are available on the Southwest Florida Water Management District's conservation lands. The highlighted icons above represent opportunities available on this property. To learn more about other District properties, please visit [WaterMatters.org/recreation](http://WaterMatters.org/recreation).



**Legend**

- property boundary (SWFWMD)
- access and parking
- longitude/latitude numbers
- ADA portable toilet
- equestrian campsites
- hiking and equestrian